



INITIAL RESEARCH RESULTS: COMMUNITY DECISION- MAKING TOOLS

C. David Crenna
Priority Decision Data Inc.

Why We're Doing This:

- **CMHC assessment of housing data situation as context for Supply Challenge:** "Housing data... scattered, outdated, inconsistent, not openly available, full of gaps - especially for vulnerable populations".
- Unprecedented federal investments to improve housing data can be shaped by CDP in cooperation with other data-user representatives...
Once-in-a-generation opportunity!
- Anticipate **increased demand for evidence-based decision-making**, e.g. to ration available local resources due to pressures of COVID-19 pandemic.
- Also an **opportunity to update CDP strategic plan and partnership arrangements** as a whole...

Scope of Research Undertaken to Date:

- Review published documents.
- Inventory statistical methods used.
- Catalogue sample graphical illustrations.
- Identify key housing decisions made.
- Learn from CMHC, CHPR, CUI events.

Some Positive Early Findings:

- Housing issues considered relevant, significant by CDP members re: poverty reduction; community social development; effectiveness of solutions.
- Greater recent attention to homelessness, lack of affordable housing during COVID-19 pandemic. Some also raising issues of data on seniors, mental health, visible minorities.
- Multiple, varied applications of housing data by CDP members right now, detailed here.
- Professional use of data by CDP already the norm... opening up opportunities for innovation, leverage.

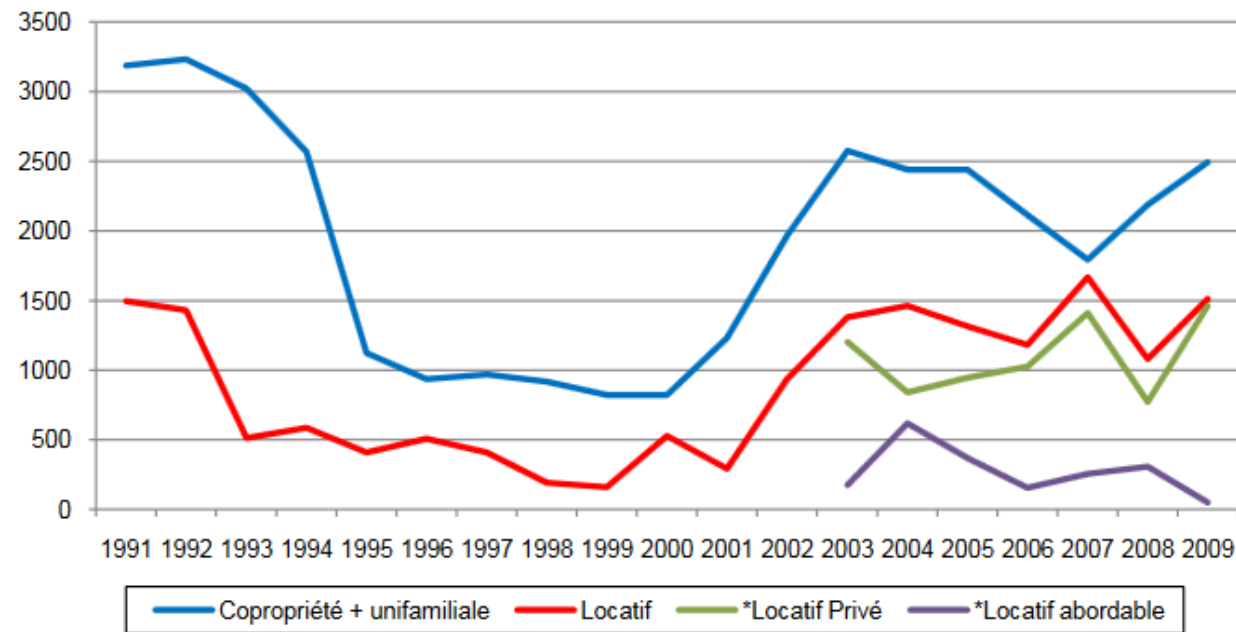


EXAMPLES FROM CDP PARTICIPANTS: HOW ARE THEY CURRENTLY USING HOUSING DATA?

CDEC de Québec - Membre du Réseau canadien de développement économique communautaire (RCDÉC):

Documenter l'offre de logement locatif abordable

Figure 1 : Mises en chantier selon le type de logement (agglomération de Québec, 1991-2009)



Source : SCHL; *Ville de Québec, OMHQ et GRT en habitation sociale et communautaire
Traitement : Service du développement économique; *CDEC de Québec

<https://cdecdequebec.qc.ca/media/etude/9.pdf>

City of Kingston - Reporting annually on local housing situation

Market Housing Data

How Kingston compares to other communities of similar size

Community	Average one-bedroom rent in 2018
Oshawa	\$1,168
Barrie	\$1,141
Guelph	\$1,034
Kitchener/ Cambridge/ Waterloo	\$1,021
Kingston	\$1,008
Hamilton	\$970
Belleville	\$918
Peterborough	\$916
Brantford	\$900
London	\$877
St. Catharine's/ Niagara	\$871
Sudbury	\$855
Average	\$949

Building permits issued in Kingston

Dwelling	2018	2017	2016	2015
Single-family	176	237	182	172
Semis/row houses	147	99	76	36
Multiple Unit Dwelling	222	406	181	310
Total	545	742	439	518

Building permits issued in the County of Frontenac

Location	2018	2017
Frontenac Islands	5	9
South Frontenac	52	60
North Frontenac	5	28
Central Frontenac	12	18

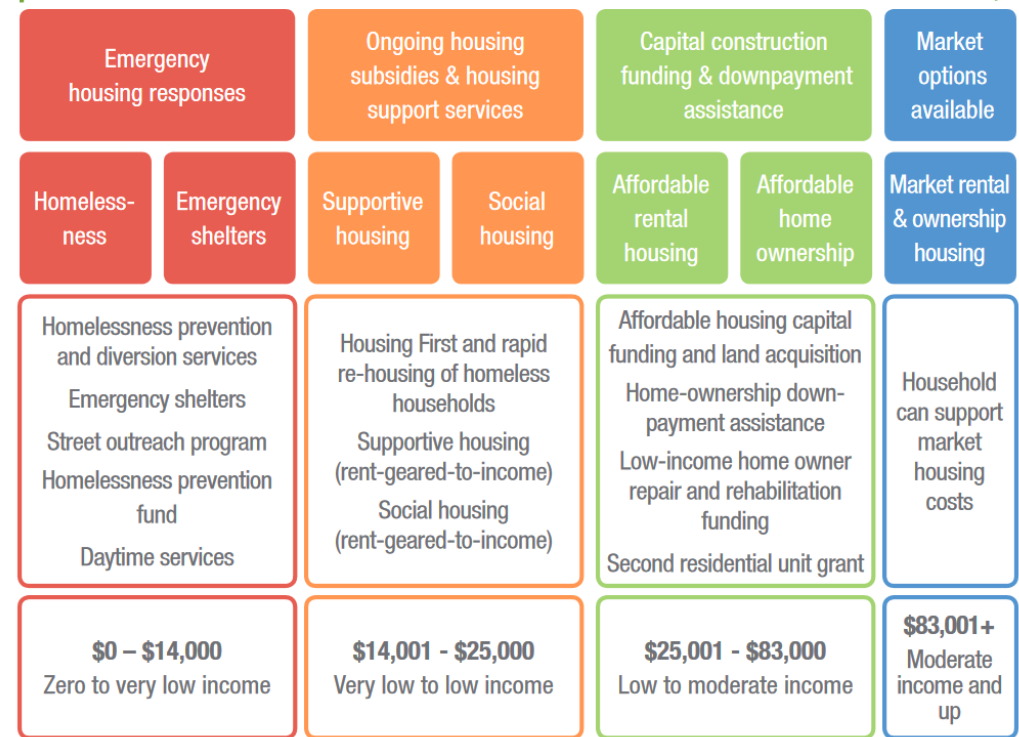
Second residential unit building permits issued

	2018	2017	2016	2015
	18	62	36	29

Average 2018 rents in Kingston

Bachelor	\$745
1 bedroom	\$1,008
2 bedroom	\$1,200

The Housing Continuum



https://www.cityofkingston.ca/documents/10180/13882/2016_HousingHomelessReport.pdf/61d09296-9329-430f-ac95-58036b53b107

Hastings County Housing Resource Centre - Spreading key information for homeless people



Rental Listings

[CLICK HERE TO LEARN MORE](#)



Community
Connections

[CLICK HERE TO LEARN MORE](#)

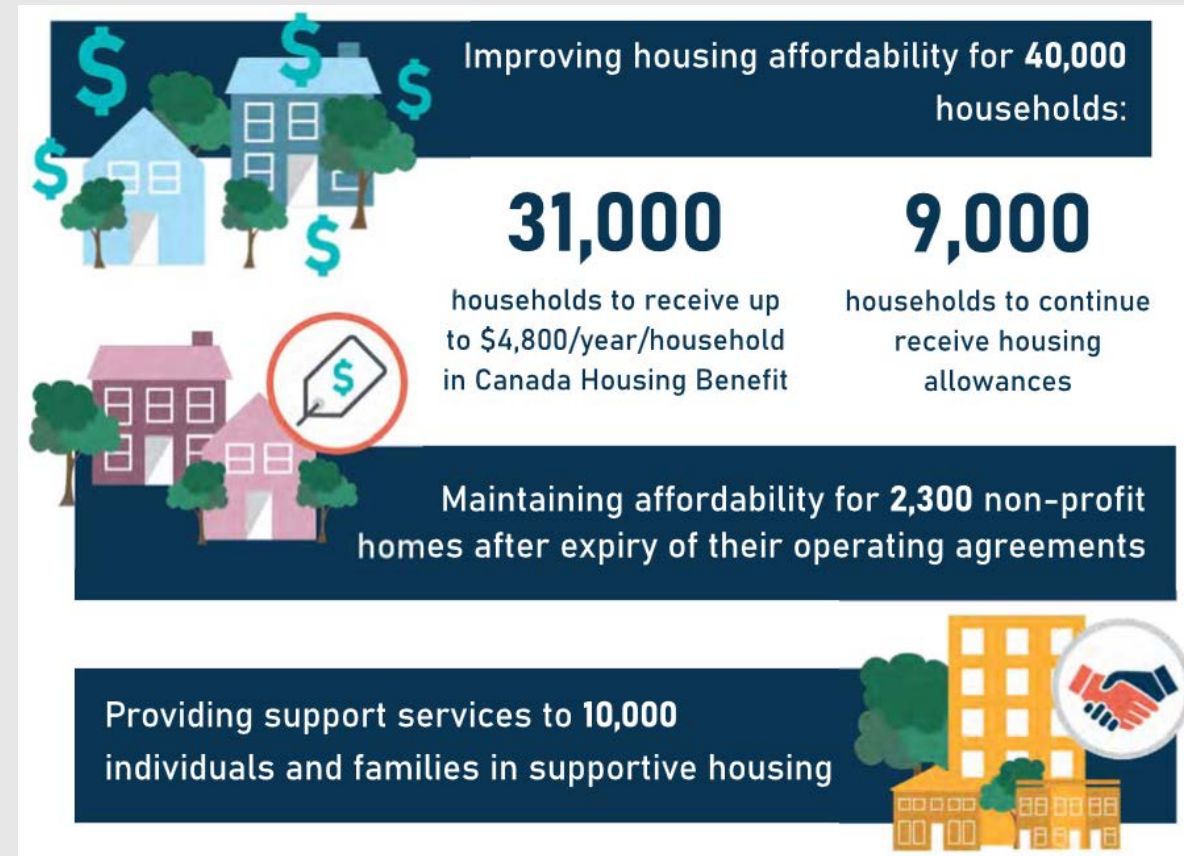
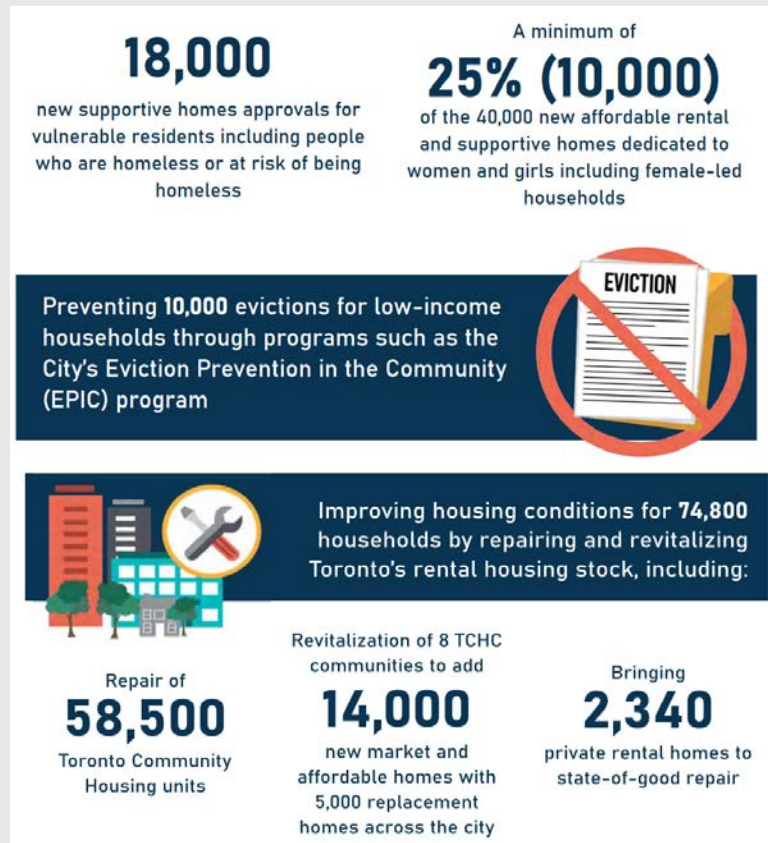


Youthab Services

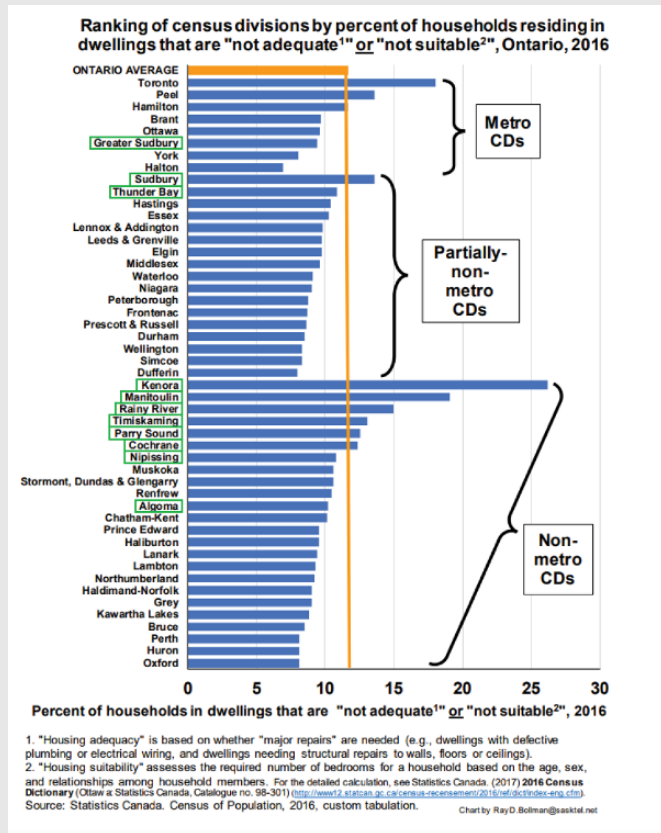
[CLICK HERE TO LEARN MORE](#)

<https://hastingshousing.com/>

City of Toronto - Setting targets: Long-Term Housing Action Plan

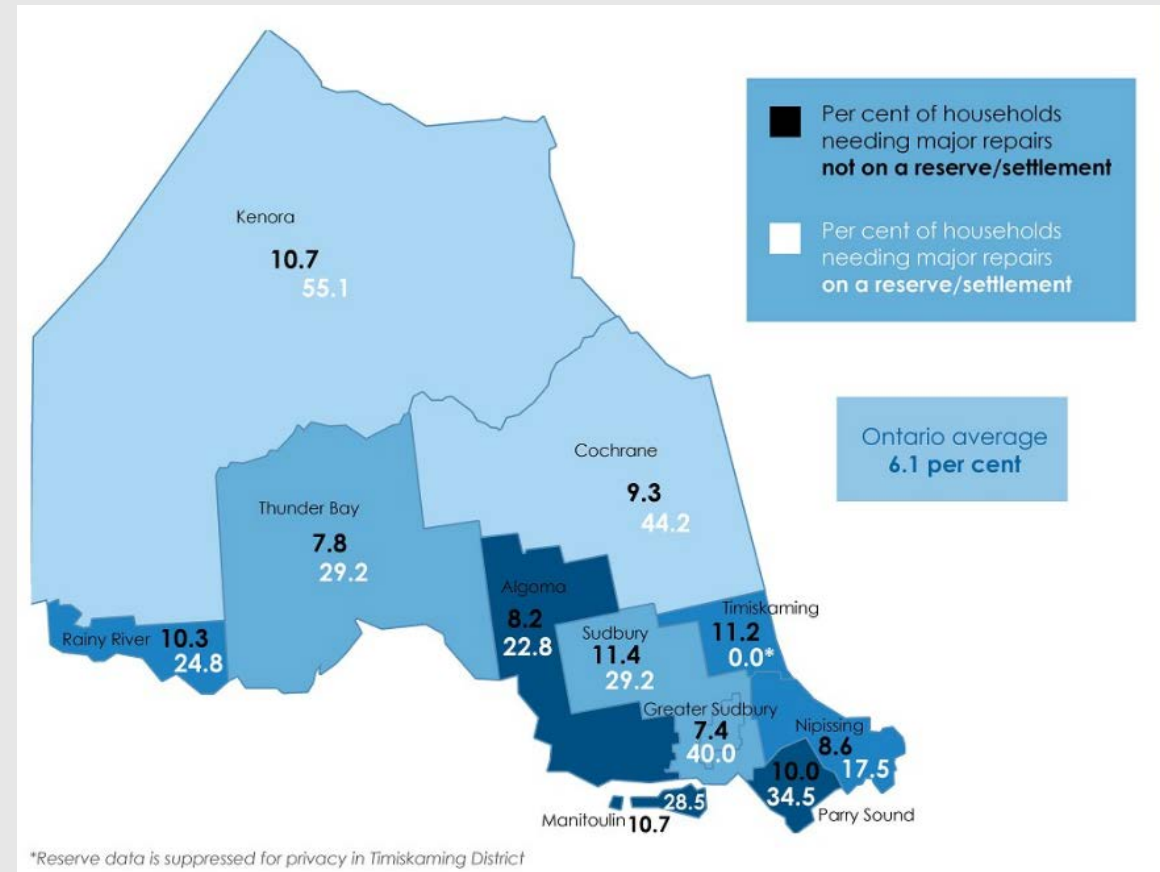


Northern Policy Institute (Sudbury) - Comparing regional housing need indicators



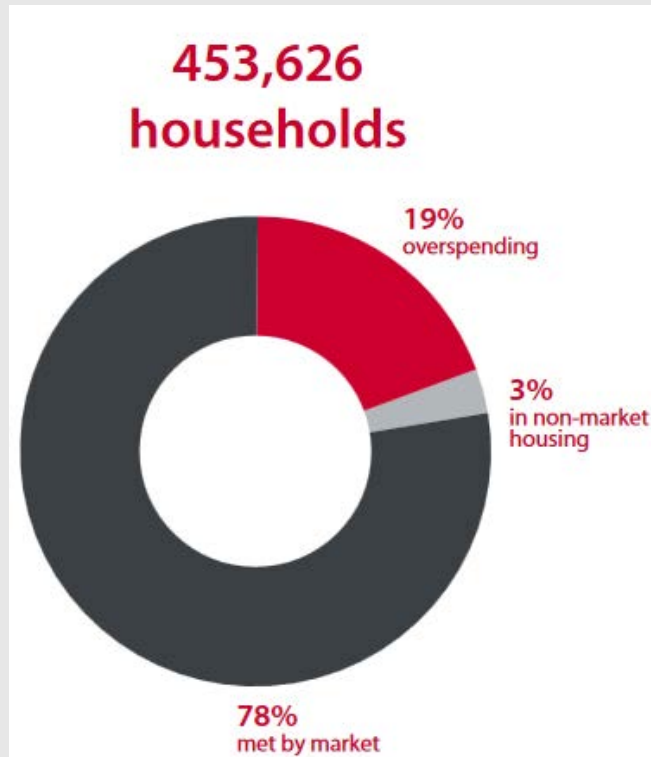
<https://www.northernpolicy.ca/fixinginadequacies>

Community Decision-Making Tools with Housing Data



<https://www.northernpolicy.ca/housingpart2>

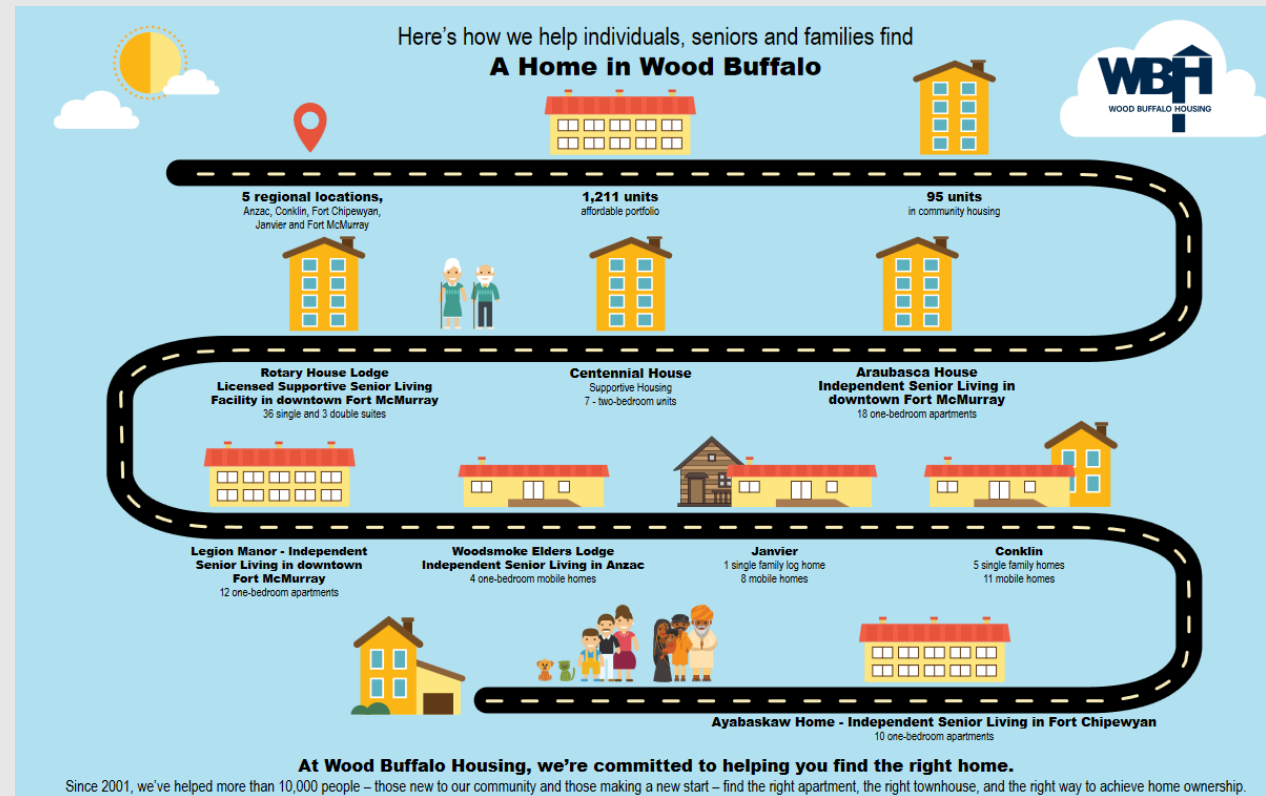
City of Calgary - Measuring positive outcomes for people



Non-market rental housing units per 500 households		
Toronto	27	
Ottawa	22	
Edmonton	19	
Vancouver	14	
Calgary	13	

<https://www.calgary.ca/cs/olsh/affordable-housing/affordable-housing.html>

Wood Buffalo Regional Municipality - Helping people find out what's available

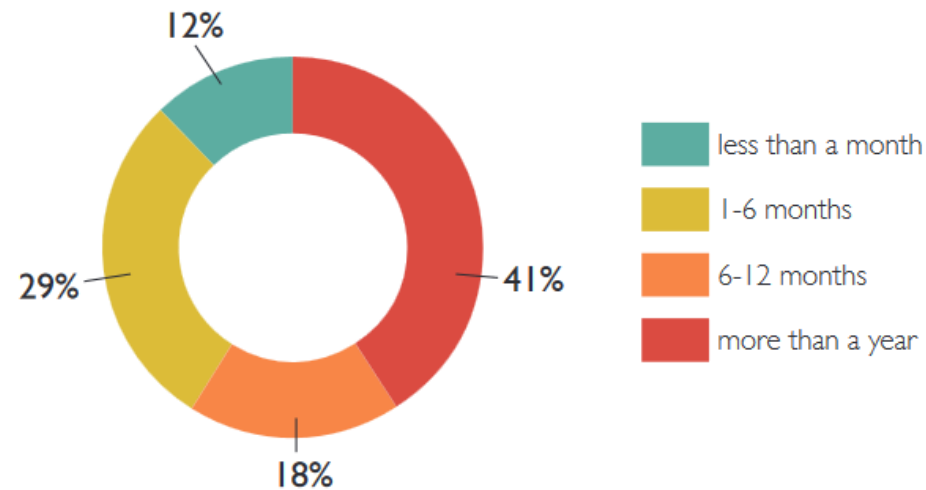


https://347q253s8h8jtkljt2m93up5-wpengine.netdna-ssl.com/wp-content/uploads/2020/09/WBHDC-2019-Annual-Report_WEB.pdf

Social Planning & Research Council of BC - Presenting fresh local housing survey data

Number of Days Homeless

Of those who were homeless, 12% had been homeless for less than 1 month while 29% had been homeless for between 1 month and 6 months. An additional 18% had been homeless for between 6 months and 1 year while 41% had been homeless for more than 1 year.



<https://www.sparc.bc.ca/wp-content/uploads/2020/11/Homelessness-Policy-Brief.pdf>

Nine Questions Emerging from Research :

1. Do data users need searchable inventory of all “housing-related” data?
2. Do users of/investors in data have comprehensive picture of housing data gaps?
3. Do decision-makers have enough data to set priorities among vulnerable groups?
4. What about *distribution*-focused solutions compared to production ones?
5. Would comparative local administrative data be of value to decision-makers?
6. Which data-presentation tools are most helpful in communicating results clearly?
7. How best can more fine-grained local data be collected and kept up to date?
8. Is a more formal data governance and standards-setting arrangement required?
9. What longer-term role would the CDP like to play, given the resources?

Four Emerging Themes from Research to Date + Some Examples of Responses:

- **Easier, faster, policy narrative-driven search methods for housing and related data.** Example: purpose-built system using AI + DB technology?
- **Assembling, cleaning and utilizing massive amount of planning-related and administrative data in housing field.** Examples: integrated regional housing production targets; municipal permits data for small geographies; municipal finance data on development charges?
- **Extrapolating from larger geographic areas to smaller ones quickly and accurately.** Example: demographically-driven models to generate finer-grained growth shares?
- **Institutional arrangements for data standards-setting and reliability assessment.** Example: housing sector assurance council or consortium with membership of all suppliers?

Questions, Further Leads:

C. David Crenna, PhD
Director and Principal
Priority Decision Data Inc.

principal@prioritydecisiondata.com

(613) 501-5410