

# Data Visualization

Tableau as Member Service, Jamie Carrick (CDP)



# The CDP's Tableau Products

- Available in the catalogue under *Data analysis and visualization tools* and through our *Tableau Infographics and Dashboards Portal*
  - Community Recovery Dashboard – Version 2.0
  - Profile Dashboards
    - Employment profile
    - Poverty profile
    - Housing profile
    - Education profile
    - Income profile
    - Regional profile


## Create your own Community Report

[Home](#) / [Content](#) / Create your own Community Report

This series of interactive dashboards, built using Tableau software, allows users to easily view and interact with data from the Community Data Program catalogue. Each dashboard explores a different theme and provides opportunities for users to visualize and analyze data at geographies of their choice. The dashboards are designed to be intuitive for users at all levels of data knowledge, and useable on both PC and Mac computers.

The only software required to use these dashboards is Tableau Reader, which can be downloaded [here](#) for free. For more detailed instructions on installing and using Tableau Reader, [click here](#).

### Dashboards




**Community Recovery Dashboard - Version 2.0**

The Community Recovery Dashboard is a monitoring tool for medium and long term COVID-19 recovery. The dashboard uses data from a variety of sources, including the Census and Labour Force Survey, to look at the state of geographic areas across Canada prior to the COVID-19 pandemic, in order to assess and compare their capacities for recovery from COVID-19's economic and health impacts.

The dashboard allows you to view profiles of individual geographies across Canada, ranging in scale from national to neighbourhood-sized, as well as compare select indicators across census tracts in a city using interactive maps and charts.

[Click here to download this dashboard from the catalogue.](#)



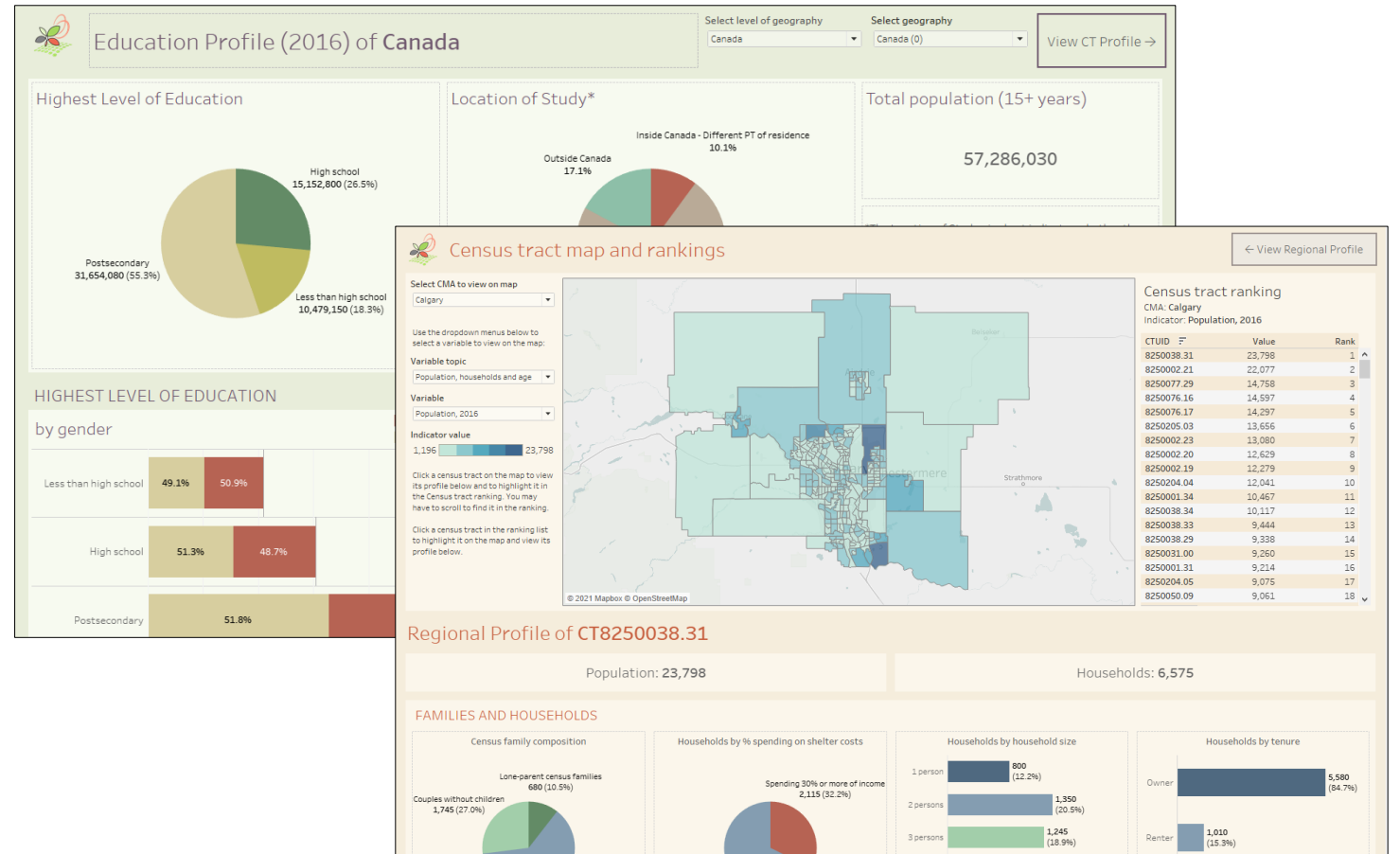
**Employment Profile Dashboard**

The Employment Profile Dashboard provides an overview of employment indicators for a geography of your choosing, using data from the 2016 Census.




# Profile Dashboards

- Uses charts, and interactive maps and lists to present data from the 2016 Census
- Each profile focuses on a different theme
- Covers all of Canada, at six levels of geography (Canada, PR, CMA/CA, CT, CD, CSD)



# Community Recovery Dashboard – Version 2.0 Changes

- New welcome page
- Improvements to layout and navigation



**Community Data Program**  
Enabling communities across Canada to measure and track local well-being

Welcome to the **Community Recovery Dashboard**.

The Community Recovery Dashboard is a monitoring tool for medium and long term COVID-19 recovery. The dashboard uses data from a variety of sources, including the Census and Labour Force Survey, to look at the state of geographic areas across Canada prior to the COVID-19 pandemic, in order to assess and compare their capacities for recovery from COVID-19's economic and health impacts.

The dashboard allows you to view profiles of individual geographies across Canada, ranging in scale from national to neighbourhood-sized, as well as compare select indicators across census tracts in a city using interactive maps and charts. The indicators in the dashboard relate to seven different themes:

- Demographics
- Employment
- Housing
- Commuting
- Place of work
- Income
- Collective dwellings

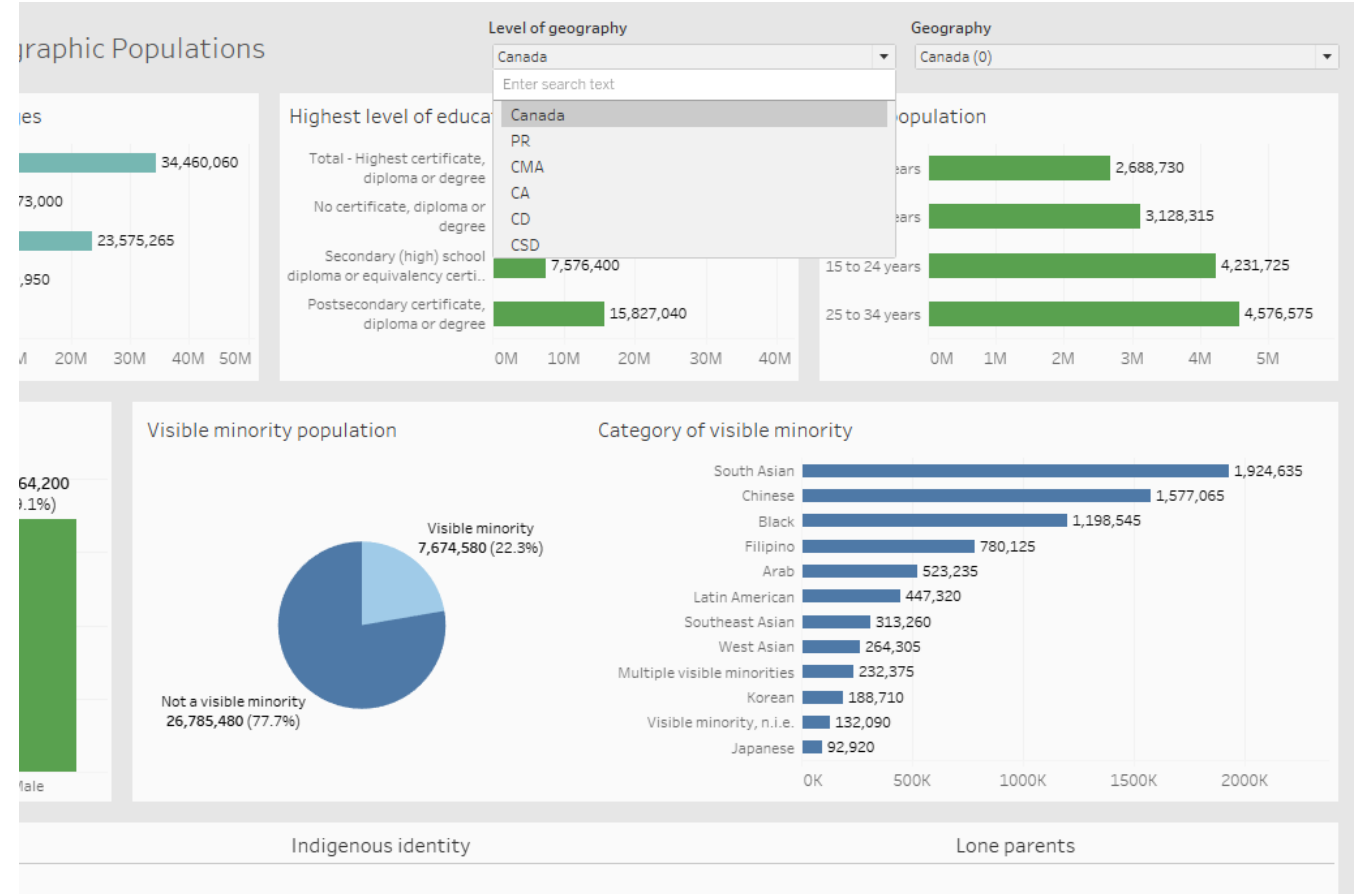
The Community Recovery Dashboard includes data for the following census geographies: Canada, provinces and territories (PR), census metropolitan areas (CMA), census agglomerations (CA), census tracts (CT), census divisions (CD) and census subdivisions (CSD).

Use the buttons below or the tabs at the bottom of the screen to navigate the dashboard.

<b>Census Tract Geographies</b>	<b>CSD and Other Geographies</b>
<b>Data Sources</b>	<b>COVID-19 Data Links</b>

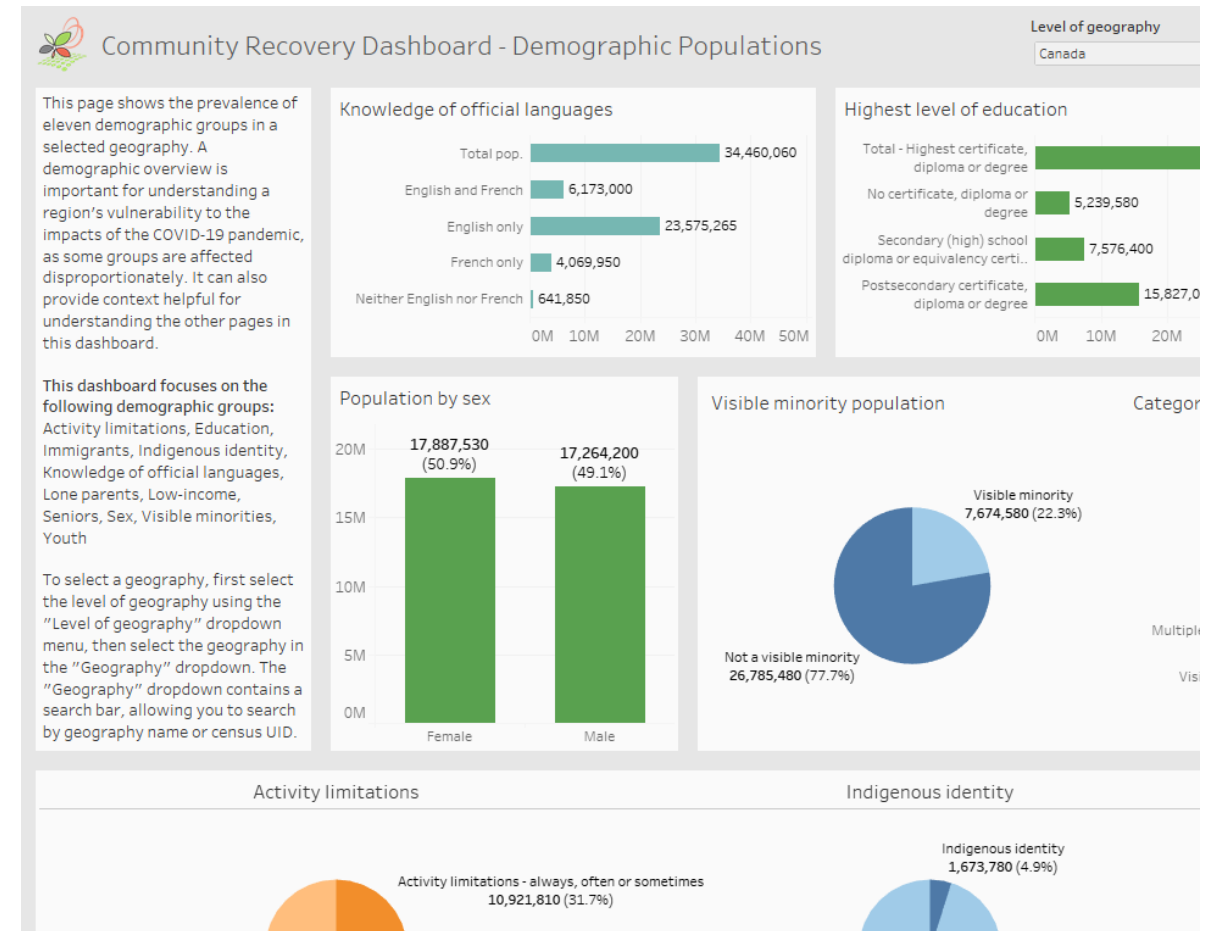
# Community Recovery Dashboard – Version 2.0 Changes

- PR, CMA, CA, CD and CSD geographies are now included in the dashboard in the “CSD and Other Geographies” section



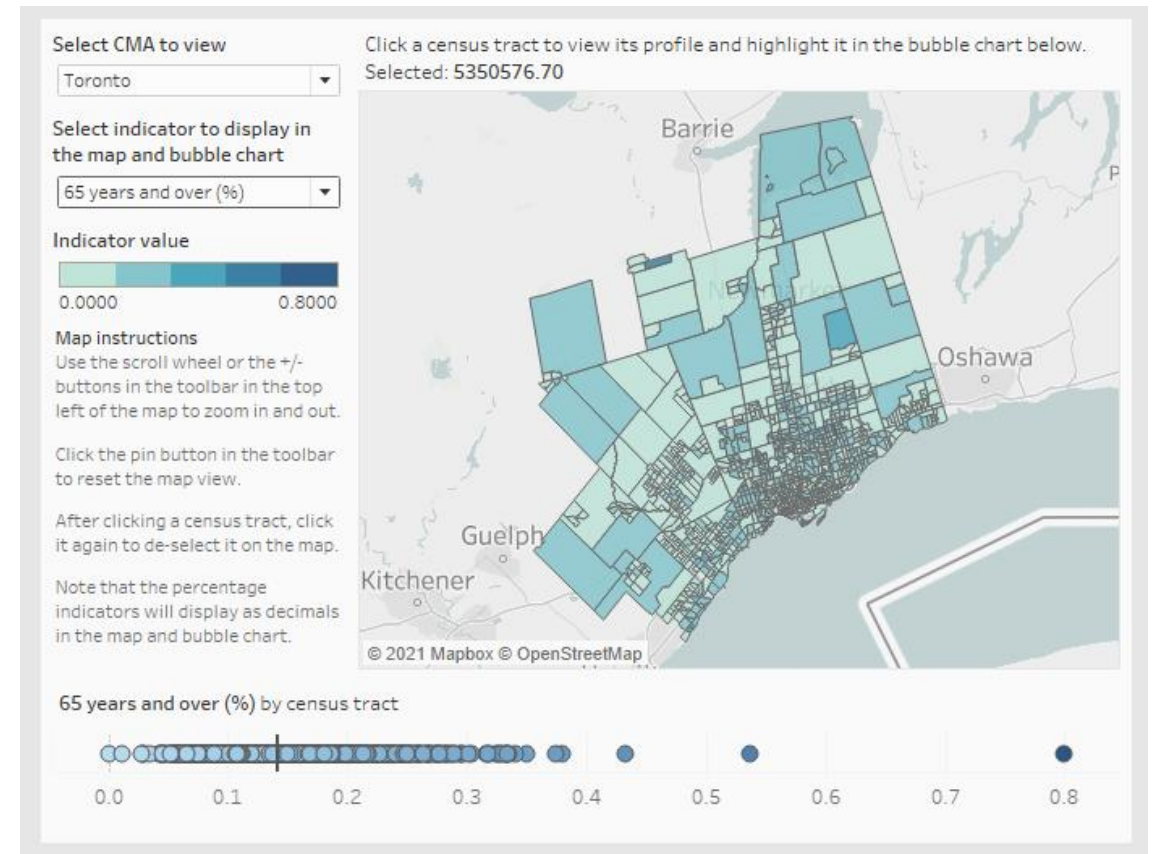
# Community Recovery Dashboard – Version 2.0 Changes

- New explanatory text on each page



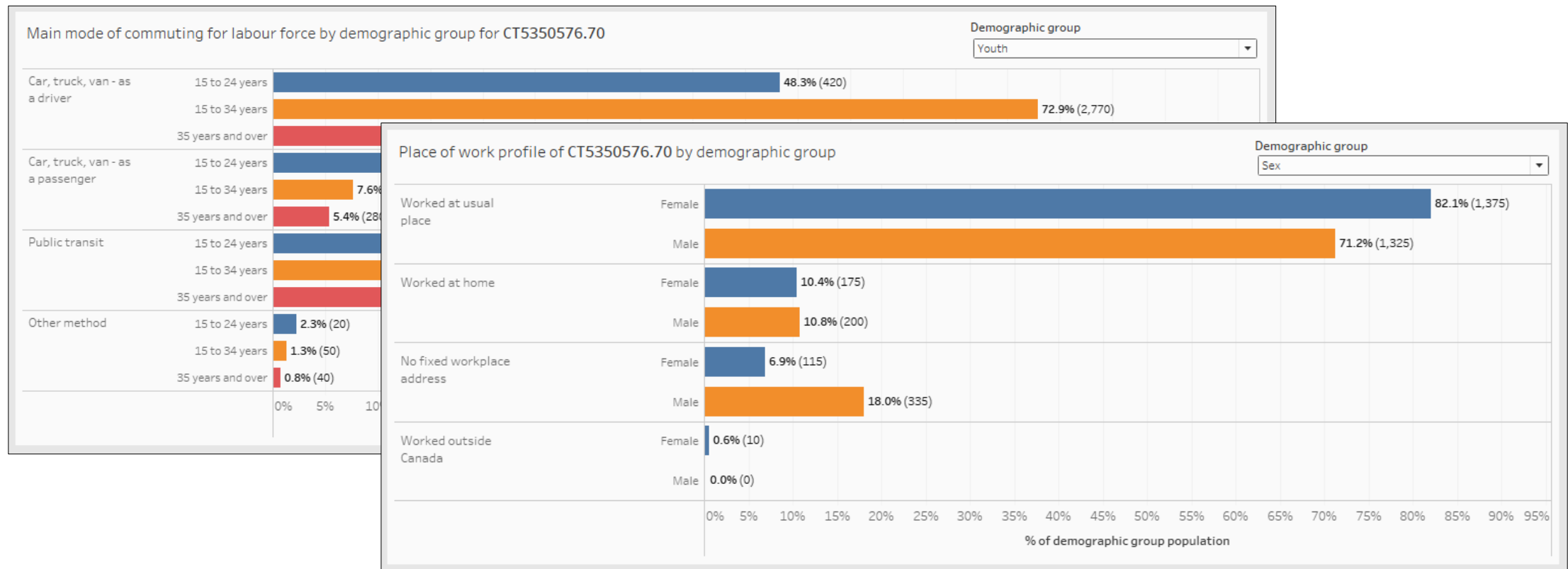
# Community Recovery Dashboard – Version 2.0 Changes

- Percentage values are now available in all maps and bubble charts
- All tabs in the census tract section of the dashboard now contain bubble charts



# Community Recovery Dashboard – Version 2.0 Changes

- Added “Sex” and “Youth” demographic group options throughout the dashboard





# Version 3.0 and beyond

- Version 3.0
  - New indicators – work from home potential, employment time series
- Future plans for the dashboard
  - Adding 2021 census data when it is available
- Questions or feedback?
  - Meeting with dashboard users to discuss the dashboard, collect feedback and answer questions?
  - Email us (about the dashboard or other Tableau related questions)



Thanks for listening!

